

# NM Southeast District 4-H Contest

Family and Consumer Sciences  
Skill-a-thon

Housing & Interior Design Identification Items  
Photos & Definitions

Revised May 2021

Housing &  
Interior Design  
ID

# Carpet/Flooring

# Cut Loop

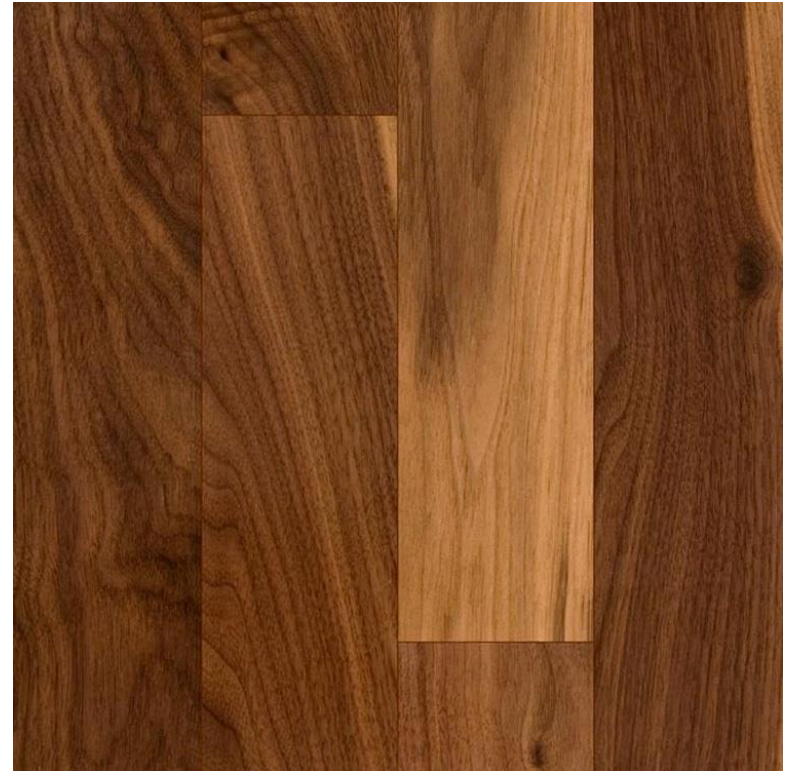


Cut and loop



- A carpet in which the face is composed of a combination of cut ends of pile yarns and loops.
- Tip for carpets: Carpet is made of yarns that are looped onto a backing. Sometimes the carpet loops are cut. When the word “loop” is used, look for loops of yarn. When the word “cut” is used, look for cut yarns.

# Hard Wood



- Hard wood is made from trees that grows slow, making it durable for flooring use. It comes in the form of planks with tongue and groove edges.

# Loop Pile (Berber)



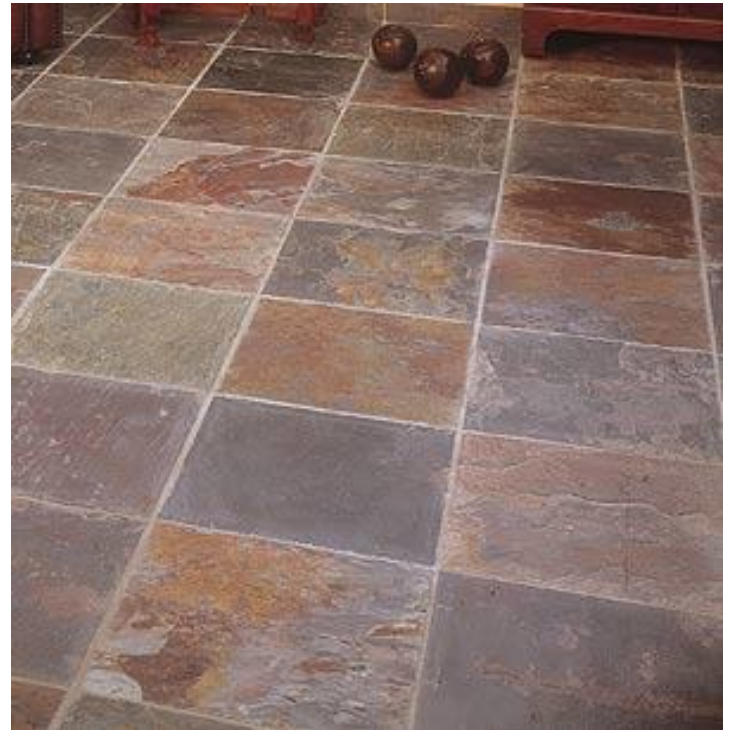
- Carpet style having pile surface consisting of uncut loops. Tight loop texture helps hide footprints and vacuum marks. Subtle patterns fit a variety of room styles.
- Tip for carpets: Carpet is made of yarns that are looped onto a backing. Sometimes the carpet loops are cut. When the word “loop” is used, look for loops of yarn. When the word “cut” is used, look for cut yarns.

# Textured Cut Pile



- A carpet in which the face is composed of cut ends of pile yarn. It is the most decoratively versatile cut-pile carpet, its textured surface helps hide footprints and vacuum marks. Textured pile is considered a great whole house carpet.
- Tip for carpets: Carpet is made of yarns that are looped onto a backing. Sometimes the carpet loops are cut. When the word “loop” is used, look for loops of yarn. When the word “cut” is used, look for cut yarns.

# Tile



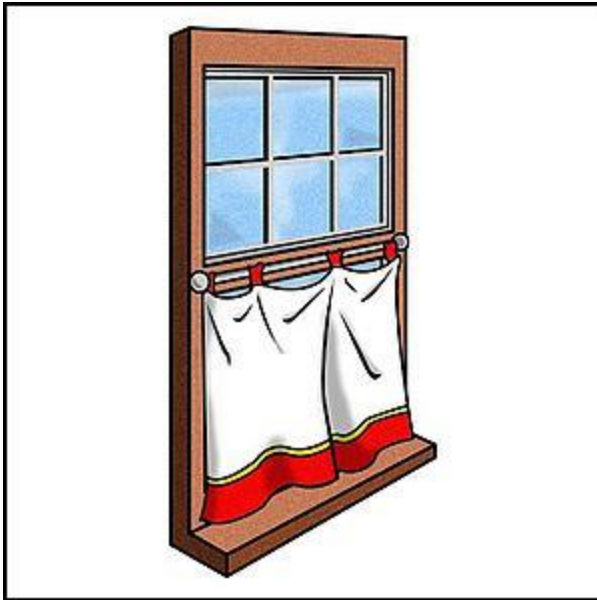
- Thin, manufactured pieces of material that come in a variety of shapes (square, rectangular, etc). Used for covering floors and it comes in a variety of materials such as ceramic, clay, natural stone, metal, or even glass.

Housing &  
Interior Design  
ID

# Curtain and Window Treatments

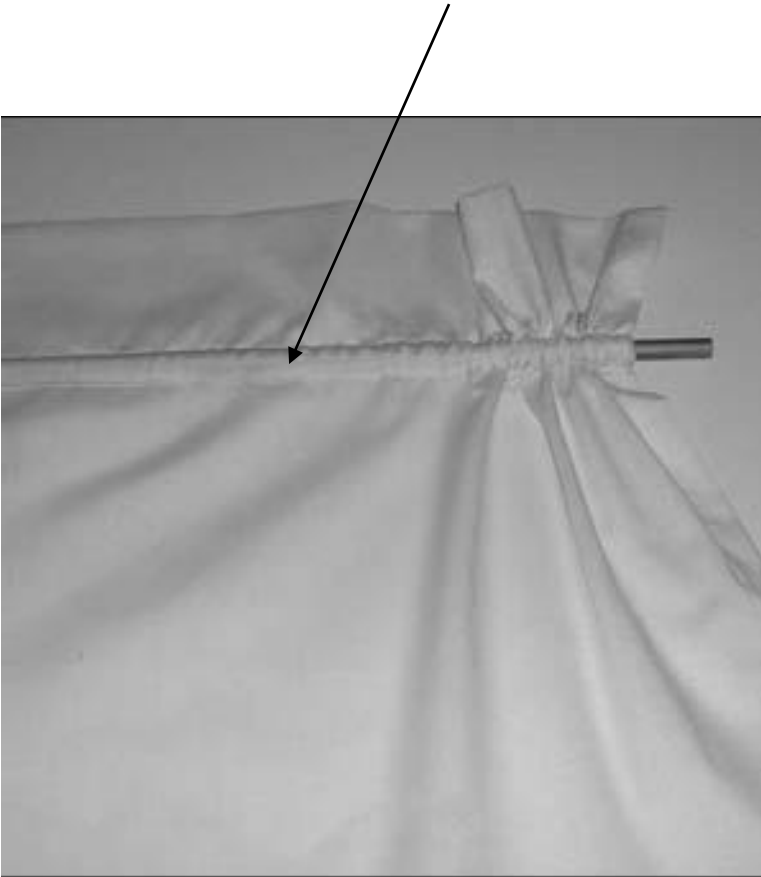


# Café Curtains



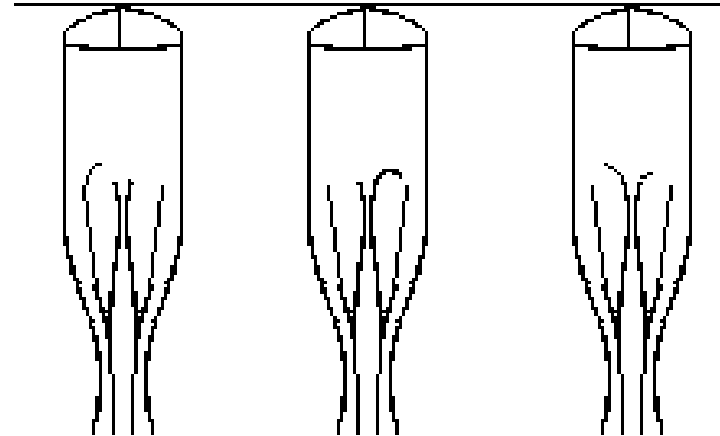
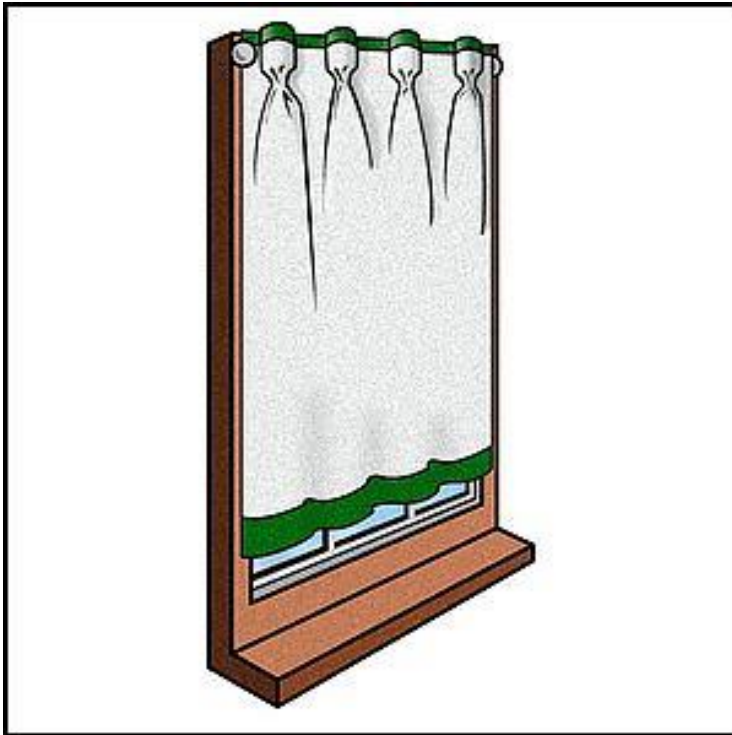
- Short curtains hung on a rod.

# Casing



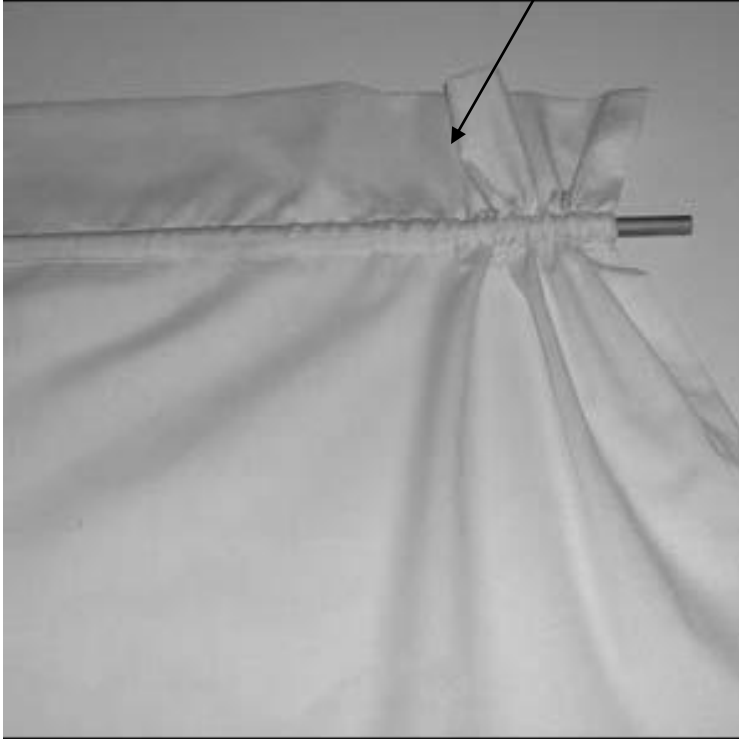
- A fabric pocket to encase a curtain rod or elastic for gathering. Usually made by folding fabric over twice and stitching. Basically, a hem with open ends.

# Goblet Pleats



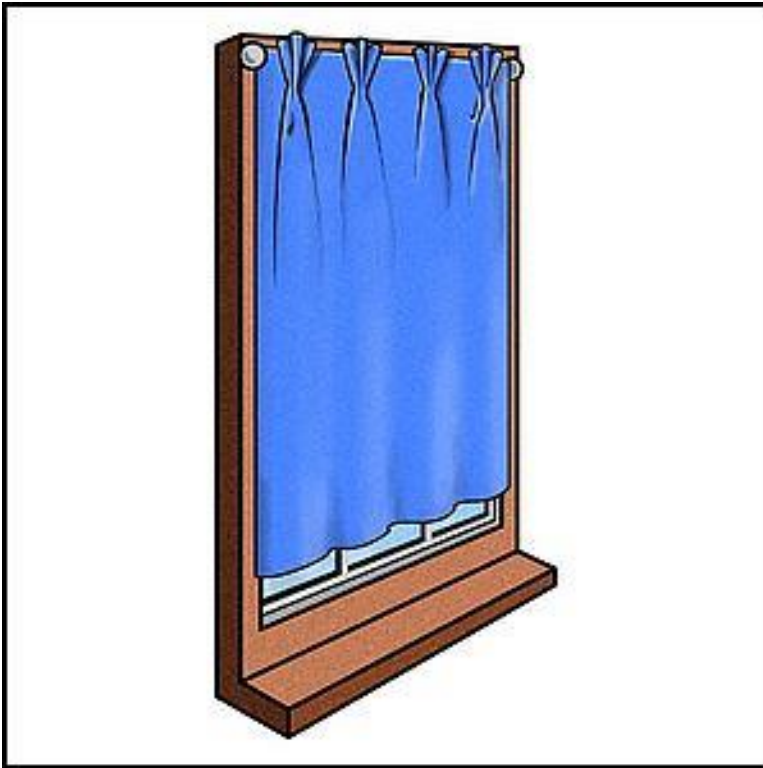
- A pleat that is pushed out and filled with curtain lining instead of folded inward.

# Header



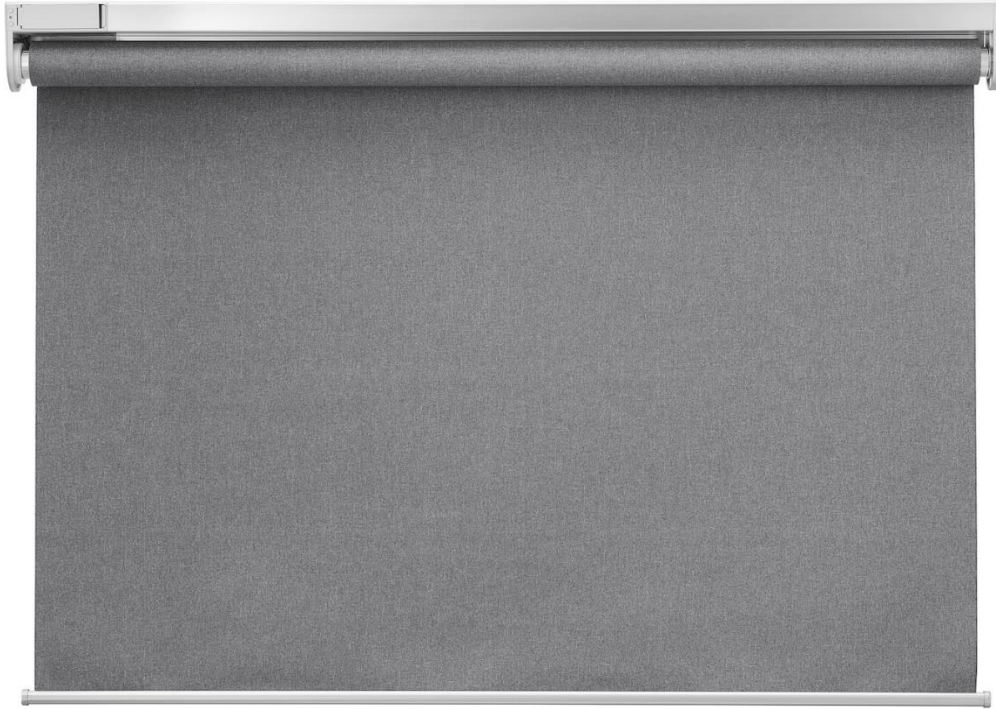
- The extra fabric above the curtain rod pocket.

# Pinch Pleats



- A style of pleat, usually triple folded, used at the header of curtain window treatments.

# Roller Shade



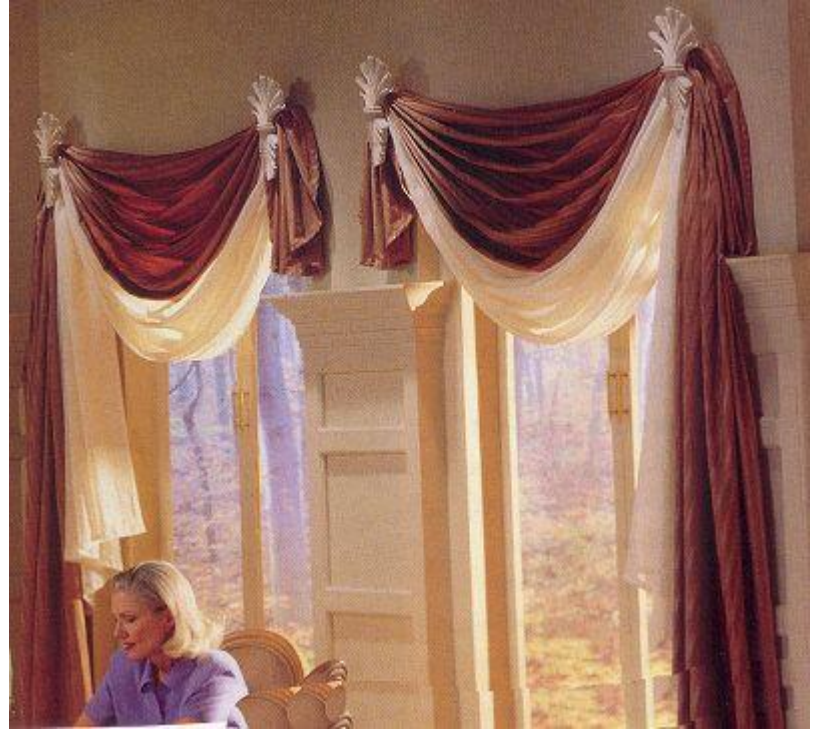
- Roll up and down to cover a window. Come in a variety of colors, textures and patterns. Provide privacy and light control.

# Roman Shade



- A window shade made from fabric that hangs flat when down but folds like an accordion when raised.

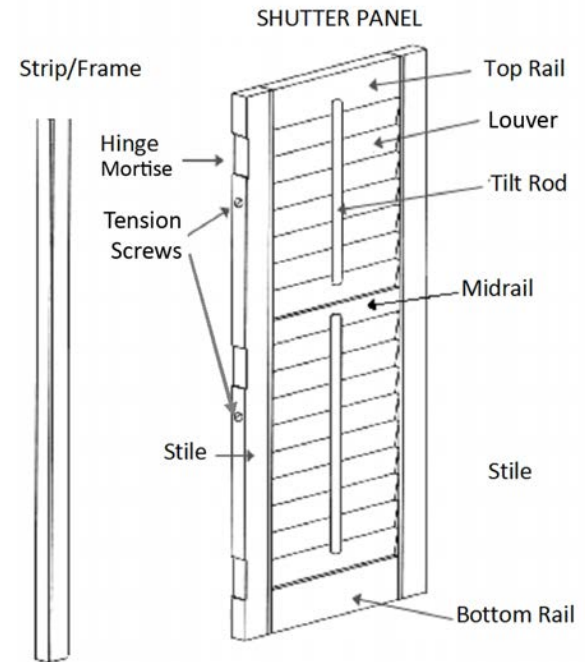
# Sconce



- A wall mounted fixture that is great for draping fabric through.

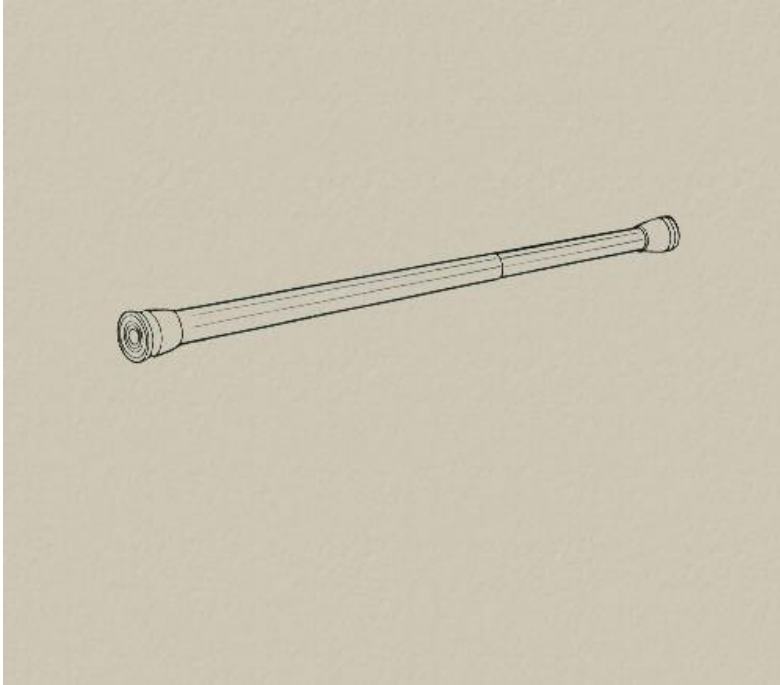


# Shutters



- A frame with horizontal slats that can be adjusted (using a rod) at an angle to allow for privacy, natural light and an outside view. May consist of one or more panels.

# Spring Tension Rod



- An adjustable rod that fits inside the window frame. The internal spring makes it possible to adjust the rod.

# Valance



- A top window treatment that can stand-alone or be mounted over curtains.

# Vinyl Blinds



- Made up of several long horizontal (or vertical) slats of vinyl material which are held together by cords that run through the blind slats. Vertical blinds run along a track system and move side to side. A cord can be pulled to stack the slats together. The slats can be rotated using a rod to allow for privacy, natural light and an outside view.

Housing &  
Interior Design  
ID

# Decorative Woods

# Base Boards



- A narrow border that runs along the base of a wall where it meets the floor.

# Chair Rail



- Chair rails have a decorative and practical function. Applied to a wall anywhere from 24 to 48 inches from the floor they are a beautiful accent to the room, running horizontally to form a wainscot look, while also protecting the wall from scuffs and dents from the backs of chairs.

# Cove Molding



- A decorative trim that is scooped-out (concave) and is applied where walls and ceilings meet. Smooths the sharp transition between the wall and ceiling.



# Crown Molding



- A decorative strip of material used to cover transitions between surfaces or for decoration. May have a combination of bowing-outward (convex) or scooped-out (concave) design.

# Door/Window Jamb



- The molding around the window or door. Any type of vertical support around an opening.

Housing &  
Interior Design  
ID

**Material**

# Brocade



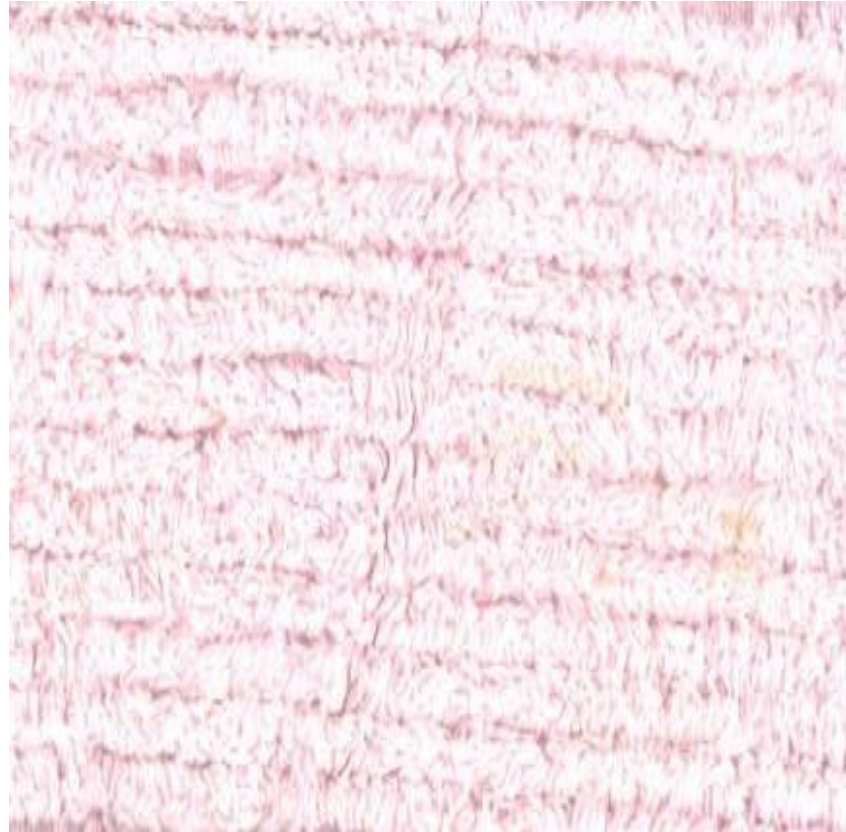
- A rich fabric with an embossed design, usually gold or silver.

# Burlap



- It is a loosely constructed, heavy, plain weave fabric made from jute fiber. It is used as a backing for carpet and may even appear as a drapery fabric.

# Chenille



- A very soft fabric made with fluffy cotton yarns.

# Chintz



- A floral printed cotton fabric.

# Damask



- A woven fabric made from wool, silk or cotton. The special weave give the fabric a raised appearance.



# Denim



- A fabric in which the warp threads are usually dyed blue or black and the weft is white so the top surface of the fabric is mainly blue or black, and the underside remains whitish.

# Gingham



- Plain weave cotton cloth with a checked pattern.

# Lining



- Fabric layer placed on the back of curtains to protect them from light and dust.

# Silk



- A very strong, yet soft fabric, made from threads produced by silk worms.

# Tapestry



- Machine woven fabric that looks hand woven.

Housing &  
Interior Design  
ID

**Tools**

# Hammer



- A hand tool that has a handle with a perpendicularly attached head or metal or other heavy rigid material, and is used for striking or pounding.

# Flathead Screwdriver



- A screwdriver that has a flat blade and corresponds to slotted screws.



# Level



- An instrument for ascertaining whether a surface is horizontal, vertical, or at a 45 degree, consisting essentially of an encased, liquid-filled tube containing an air bubble that moves to a center window when the instrument is set on an even plain.

# Needle-Nose Pliers



- The long, tapering, forged head that gives needle-nose pliers their name is particularly useful in electrical work where spaces can get tight. May come with a wire-cutting blade near the hinge.

# Phillips Screwdriver



- A screwdriver with four intersecting perpendicular points that corresponds to Phillips screws.

# Putty Knife



- A tool having a flat flexible blade, used for scraping dry glues and paints and for spreading putty, paste and spackle.

# Safety Glasses



- Used to protect eyes when using an electric sander, etc.

# Tape Measure



- A tape of cloth, paper, or steel marked off in a linear scale, as inches or centimeters, for taking measurements.

# Wrench



- A hand tool used for holding, twisting, or turning an object (such as a bolt or a nut).

# Utility Knife



- A hand tool that contains a sharp blade. It is used to cut (or trim) plastic or wood materials, tape, cardboard or other packaging material, wallpaper and more.



Housing &  
Interior Design  
ID

**Painting**

# Pad Applicator



- Small pad with a handle on the back that is used to apply paint.

# Paint Brush, Natural Bristle



- Natural bristle brushes are made from animal hair (such as hog or badger). Natural bristle brushes work best for oil-based paints, stains and clear-coats.

# Paint Brush, Synthetic Bristle



- Synthetic paint brushes have bristles constructed from man made materials, such as nylon or polyester. Work well with latex and acrylic paints because their smooth texture of the bristles make it easier to achieve an even finish.

# Roller



- A device used for applying paint consisting of a cylinder attached to a handle and a pad which fits over the cylinder.

# Roller Tray



- A container that holds paint when using a paint roller.

# Sand Paper



- Paper with sand or another abrasive stuck to it, used for smoothing or polishing woodwork or other surfaces.

Housing &  
Interior Design  
ID

**Windows**



# Casement Window



- A hinged window operated by a crank mechanism that can open in or out.

# Double Hung Window



- The most common type of window, consisting of an upper and lower sash.

# Palladium



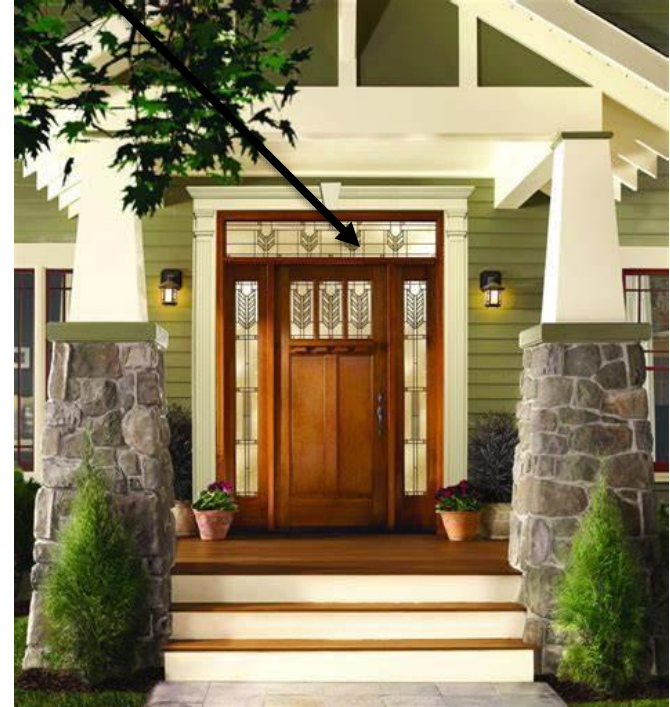
- A 3-part window composed of a large, arched central section. Two narrower, shorter sections that have square tops are on both sides of the arched central section.

# Picture Window



- A large window with fixed panes.

# Transom



- A window located over the top of a window or a door. Some transom windows open to provide fresh air, while others have been installed for decorative purposes and to allow natural light in a home.